



STONEBRIDGE World School



StonebridgeWorldSchool.org

Wednesday, March 31, 2021

Hello, Stonebridge World School Families,

Welcome to Spring! We hope you are enjoying some of the warmer weather and Spring rainfall.

Things are continuing to hum along in the building and at home with our virtual learners. It's been great to watch Stonebridge students continue to learn and grow together as they've transitioned to in-person learning.

Soon we'll be seeing many of our Middle School students in the building for full, in-person learning. We can't wait to see them everyday!

There are a few reminders and important items below. Please make sure you read through them and let us know if you have any questions!

A few reminders as students are continuing to return to in-person learning...

TRAVEL CONSIDERATIONS FROM THE MINNESOTA DEPARTMENT OF EDUCATION (MDE)

Considerations before traveling

Given the high level of COVID-19 spread in our communities, any unnecessary travel is highly discouraged. If you must travel outside the state or country for work, study, medical care, or personal safety and security, do what you can to protect yourself and your family.

Before you travel, think about:

- How much COVID-19 is spreading where you are going and how much it is spreading in your local community.
- Whether you or someone you are traveling with could get very sick from COVID-19.
- How easy or difficult it will be to keep 6 feet between people.
- Whether you would be able to miss work, school, or other activities if you get sick.
- For more tips and things to consider when traveling, see [CDC: Travel during the COVID-19 Pandemic.](#)

Travel to or from Minnesota

- If you are sick or have tested positive for COVID-19, do not travel.

Out-of-state travel is highly discouraged.

- People who visit Minnesota, and Minnesotans returning after traveling out of state, are asked to stay away from others (quarantine) for 14 days after they arrive in Minnesota. During those 14 days, it is important that you stay home and watch for symptoms. If you must go out, wear a mask, stay 6 feet from other people, and wash your hands often.
- Staying away from others for 14 days is safest. In some circumstances, a shortened quarantine period may be possible. For more information, see [Close Contacts and Tracing](#) and [Quarantine Guidance for COVID-19 \(PDF\)](#).
- If you are close to someone with COVID-19 during travel, follow guidelines for [how long to keep away from others \(quarantine\)](#).
- For information on testing, visit [Getting Tested for COVID-19](#).

After traveling

- Review the CDC's [After You Travel](#) webpage.

Visit [CDC: Travel](#) for more information about traveling during the COVID-19 pandemic.

FOOD DELIVERY/ HOMEWORK DELIVERY

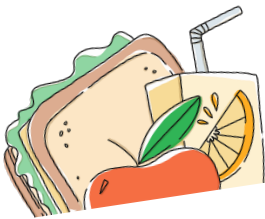
The last food and homework delivery will happen on March 24th.

MCA and ACCESS TESTING FOR STUDENTS IN DISTANCE LEARNING

Distance learning students will take the MCA test during the same testing period as students in In-Person learning. 3-8th grade students will take MCA in Math and MCA in Reading. 5th and 8th grade students will take MCA in Science. Tests may be given over multiple days depending on how long it takes a student to finish. Each testing session usually takes 1-1.5 hours.

If your child is participating in Distance Learning, your child's teacher will contact you and let you know when your child will need to come to school for testing. Parents will not be allowed in the building. The office will contact parents when their child has completed the test and is ready to be picked up.

If you have questions related to testing, please contact your child's teacher.



P-EBT INFORMATION

The state will mail P-EBT cards to your home address. If you need assistance with anything related to P-EBT benefits, please see below:

[P-EBT help](#)

[P-EBT Webpage](#)

651-431-4608 or 1-833-454-0153

APPOINTMENTS

If you need to pick your child up early for an appointment, please remember to call the office in advance at 612-877-7400.

BUS INFORMATION

- Please remind your child that he/she must wear a mask before entering the school bus.
- For up to date busing information, you can download the Versatrans My Stop app. The app will allow parents and guardians secure access to information on where their child's school bus is and what time it is expected to be at their stop. [Click here for more information.](#)
- Students must be at their Bus stop 5 minutes before their anticipated pick up time in case the bus is running early. Don't forget to use your My Stop App to track your child's bus! You can also call the bus company at 612-238-8080. The school does not have a way to track your child's bus.

CURRENT VISITOR POLICY

Currently, there is a **No Visitor** policy at Stonebridge. If you would like to speak to someone in the office, please call 612-877-7400. You can also access teacher contact and support staff contact information here: [Teacher Contact Information](#); [Support Staff Contact Information](#).

PARENT PICK UP

- **We have contactless Parent Pick Up.** If you are picking up your child, please pull into the parking lot near door #5. Your child will exit the building through door #6 and be escorted by a staff person. You are asked to wait in your car.
- Please observe the dismissal time of 3:45. For parent pick up please pull up to door #5 in the parking lot and wait until dismissal. At 3:50pm a staff member will go out to your car and radio for your student to come out. We ask that you wait in your car until dismissal starts.

TRANSPORTATION CHANGES

If you decide to pick up your child instead of having them ride the bus home, you must call the school office at 612-877-7400 **prior to 2:30pm** and speak to a staff member to confirm the change. **If you call after this time we may not be able to accommodate the change and your student will be put on the bus.**

ATTENDANCE REMINDER

- If your child is absent, please call **612-877-7498** to report the absence. Make sure you are not calling or texting your child's teacher with information related to absences. If the office is unavailable to answer your call, please leave a voicemail. The office will return your call once they are not on the other line.
- If a student is brought to school by a parent after their class has had lunch the student cannot be enrolled for the day unless it was a previously excused absence.

STUDENT ILLNESS

If your child is sick, please make sure they are staying home. Please make sure to call in their absence at 612-877-7498.

UPDATING IMMUNIZATION RECORDS

Immunization records are required as part of the registration process for school. Please make sure we have updated records for each of your children. Call your child's clinic or contact the public health office (low or no cost immunizations) at 612-348-3000 to schedule appointments. Please send any updated immunization information to school with your child.

CONTACTING YOUR CHILD'S TEACHER

The best way to reach your child's teacher is by emailing him or her. You can find the emails for all teachers here: [Classroom Teachers](#)

You can also call teacher's using their direct line. They will not be able to answer when they are teaching but they will give you a call back during their daily prep time. Please allow up to 24 hours for teachers to respond. You can find numbers for teachers direct lines here: [Classroom Teachers](#)

There are a handful of other announcements
that we would like to share with you



HEALTH INSURANCE

Please find attached information on free to low cost health insurance options Minnesota provides for children.

[MNSURE INFORMATION](#)



SUPPORT STONEBRIDGE WITH YOUR AMAZON PURCHASES

Shop at **smile.amazon.com**. Select Stonebridge World School as your supporting charity. Amazon will donate .5% of your purchase total.



GIRLS ON THE RUN

Check out 2 after school options for 3rd-8th grade Stonebridge Girls...

Girls on the run is for EVERY girl in 3rd-5th grade! Twice per week for 10 weeks, girls of all abilities will have fun, make friends, increase their physical activity levels, and learn important life skills. The season ends with a noncompetitive 5k!!

Register today: www.gotrtwincities.org/Program-Registration

Heart and Sole is for 6th-8th Grade girls! Join for an 8-week program that will empower students to tap into their strengths and learn new life skills. Every week, they will run, laugh and learn about what makes each other tick. The program ends with a celebration and a 5K!!

Register today: www.gotrtwincities.org/Program-Registration

Both programs will begin in April and be held after school. Practice days will be Wednesday/Thursday from 4:00-5:30. Parents will need to pick students up at 5:30 on practice days.



Apply now for the 21-22 School Year

Pre-K: If your child is turning 4 by September 1, he or she is eligible for Stonebridge World School's Pre-K program. Spaces are limited! Apply online today and we will contact you with information on the enrollment process! [Click here to apply online](#)

K: If you know any families that are looking for a new school, please let them know about Stonebridge! Children turning 5 by September 1, are eligible for Stonebridge World School's K program. Spaces are limited! Apply online today and we will contact you with information on the enrollment process! [Click here to apply online](#)

1-8: If you know any families that are looking for a new school, please let them know about Stonebridge! We always appreciate all of the referrals from our Stonebridge families. You can share this link with your friends and family in order to make it easy for them to fill out an application: [Click here and share the link with friends and family](#)

STAY CONNECTED

- Make sure you have downloaded the Bloomz app and logged in with the password that your child's teacher has provided. You'll stay up to date on information and be able to connect with teachers and staff members through the Bloomz's messaging system.
- Join to stay up to date on important information!
 - [Facebook page](#)
 - [Instagram](#)
 - [Twitter](#)
 -

April School Lunch Menu



Click here to view the April Lunch Menu: [April Menu](#)

April 1	Third Quarter Ends
April 2-9	No School-Record Day and Spring Break
April 12	School Resumes/ 4th quarter begins

Stonebridge World School
4530 Lyndale Ave South
Minneapolis, MN 55419
612-877-7400